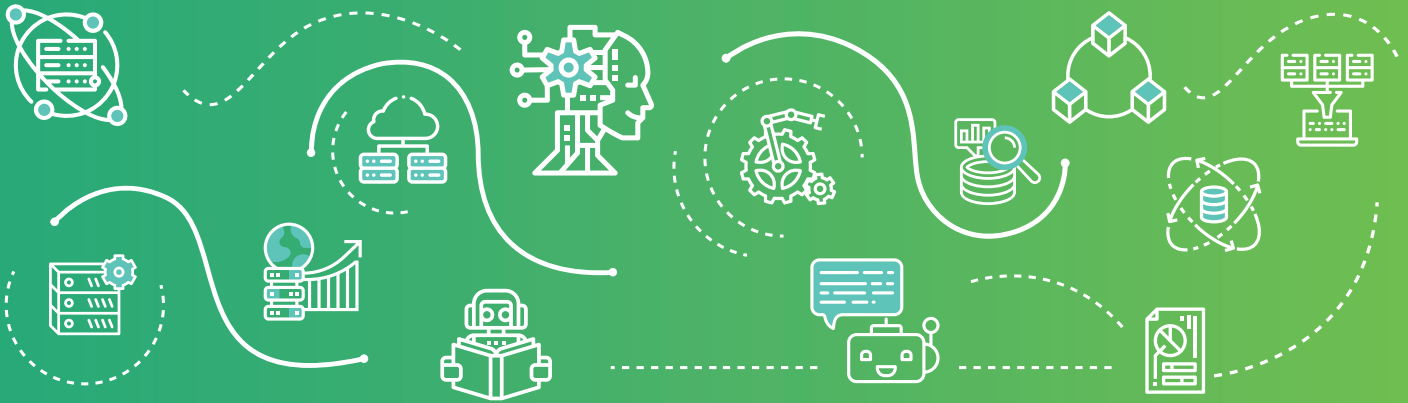


# TMA Data Science Lab

*maximizing the value of your data*



**400 developers**

**Clients from Europe, USA,  
Australia, New Zealand,  
Japan, Korea**

- ▶ AI & machine learning
- ▶ Big data & analytics

- ▶ Telecom
- ▶ Banking
- ▶ Healthcare
- ▶ Pharmaceutical
- ▶ AgriTech
- ▶ E-commerce
- ▶ Retail
- ▶ Automotive
- ▶ Security
- ▶ Manufacturing

## Sample applications

- ▶ Network Analytics
- ▶ Healthcare Analytics
- ▶ Machine Optimization
- ▶ RPA/Document Parser
- ▶ Cyber Security
- ▶ Identity Analytics
- ▶ Brand Detection
- ▶ Student Analytics
- ▶ Traffic Analytics
- ▶ Agriculture Data Analytics
- ▶ Surface Analysis
- ▶ Distribution Analytics & Forecasting
- ▶ Social Network Content Analytics
- ▶ Personalized Car Navigation

Check Technical Feasibility  
Find Technical Solutions

Build Product Prototypes

Design & Implement  
R&D Projects

Build & Operate Your  
Innovation Centers

### Sample AI/ML Projects

Project	Description	Technology
Machine Optimization	A comprehensive solution combining Smart Device Framework, Predictive Maintenance, Machine Performance Optimization, and Edge Data Secured Processing to control, monitor, optimize device performance and reduce energy consumption.	<ul style="list-style-type: none"> <li>Reinforcement learning</li> <li>Fuzzy logic</li> <li>Data prediction</li> <li>Time series</li> <li>IoT</li> </ul>
RPA/Document Parser	Apply AI/ML/NLP/OCR to automate business processes to increase productivity and reduce manual work and time Engine to extract contents from scanned documents <ul style="list-style-type: none"> <li>Structured documents</li> <li>Un-structured documents</li> </ul>	<ul style="list-style-type: none"> <li>AI/ML, deep learning</li> <li>NLP</li> <li>OCR</li> <li>Computer vision</li> <li>Tensorflow</li> <li>Support Vector Machine</li> <li>K-means</li> <li>Collaborative filtering</li> </ul>
Student Analytics	<ul style="list-style-type: none"> <li>Analyze student personalities, strengths and weaknesses based on past test results</li> <li>Propose personalized learning contents and tests for each student</li> <li>Propose appropriate learning path, courses and lessons</li> </ul>	<ul style="list-style-type: none"> <li>AI/ML</li> <li>Data analytics</li> </ul>
Brand Recognition	Auto identify brands in advertisements: <ul style="list-style-type: none"> <li>Labeling</li> <li>Product recognition</li> <li>Brand recognition</li> </ul>	<ul style="list-style-type: none"> <li>AI/ML, deep learning</li> <li>Object detection</li> <li>OpenCV</li> <li>NLP</li> <li>Tensorflow</li> </ul>
Personalized Car Navigation	<ul style="list-style-type: none"> <li>POI search function on car</li> <li>Result list ranked and optimized based on learned user interests, preferences</li> </ul>	<ul style="list-style-type: none"> <li>AI/ML</li> <li>Matrix factorization</li> </ul>
Check Vehicle Parking by Drone	Drone to fly in certain area and pre-defined schedule to check if any vehicle is parking in a wrong place	<ul style="list-style-type: none"> <li>AI/ML</li> <li>Object detection</li> <li>Video streaming</li> </ul>



Data warehouse and data mining design and implementation



Collect and analyze data in real-time  
Data integration and aggregation



Data visualization



Standard and custom reports



Data analytics and forecasting



Analyzing high volume structured and unstructured data



Data migration

## Sample Big Data & Analytics Projects

Project	Description	Technology
Network Analytics	<ul style="list-style-type: none"> <li>Monitor and analyze performance of network devices</li> <li>Ensure high scalability and capacity</li> </ul>	<ul style="list-style-type: none"> <li>Spark</li> <li>Hadoop</li> <li>Kafka</li> <li>Redis</li> </ul>
Distribution Analytics & Forecasting	<ul style="list-style-type: none"> <li>Supply chain and product distribution analytics</li> <li>Consolidating data from multiple systems into a single source</li> <li>Providing a global visibility of distribution inventory across the countries.</li> <li>Standard and custom reports</li> <li>Sale analytics and forecasting</li> </ul>	<ul style="list-style-type: none"> <li>SSRS, SSIS</li> <li>Data Warehouse</li> <li>Data Mart</li> <li>Crystal reports</li> <li>Cognos reports</li> <li>QlikView</li> <li>Paradox</li> </ul>
Cyber Security	<p>Analyze log data in real-time:</p> <ul style="list-style-type: none"> <li>Attack statistics</li> <li>Real-time attack monitoring</li> <li>Malware alert</li> </ul>	<ul style="list-style-type: none"> <li>Spark</li> <li>Kafka</li> <li>Hive</li> <li>Cloudera</li> <li>MongoDB</li> <li>Cassandra</li> <li>Teradata</li> </ul>
Social Network Content Analytics	<ul style="list-style-type: none"> <li>Collect, track and report social network data</li> <li>Analyze data for marketing campaigns</li> </ul>	<ul style="list-style-type: none"> <li>Spark</li> <li>Hadoop</li> <li>Redis</li> <li>Cassandra</li> </ul>
Traffic Analytics	<ul style="list-style-type: none"> <li>Collect and analyze traffic data in real-time</li> <li>Speed profile</li> </ul>	<ul style="list-style-type: none"> <li>Infrastructure: Hadoop, Map Reduce, Pentaho, MS BI Platform</li> <li>Modeling/Analytics: Machine learning / data mining techniques (e.g. SVM, Neuron network...), R, Mahout</li> <li>Reporting/BI: SSRS, Pentaho BI, Hive, 2D/3D map</li> </ul>
Surface Analysis	Visualize and analyze surface based on 3D images	<ul style="list-style-type: none"> <li>Mass spectrometry imaging(MSI)</li> <li>Analyzing ToF-SIM data (multiple dimension)</li> <li>Principal component analysis (PCA) algorithm</li> <li>Bayes theorem</li> <li>R Language</li> </ul>

# AI & Machine Learning

## Skill Set

### Machine Learning

- ▶ Deep Learning: TensorFlow, Keras, Pytorch
- ▶ Federated Learning
- ▶ Descriptive Statistics

### Supervised Learning

- ▶ Linear Regression
- ▶ Neural Networks
- ▶ Support Vector Machines

### MLaaS

- ▶ Google Cloud AI
- ▶ Microsoft Azure AI
- ▶ AWS AI

### Reinforcement Learning

- ▶ Markov decision process
- ▶ Q-Learning and Deep Q-Networks

### Unsupervised Learning

- ▶ K-Means Clustering
- ▶ Anomaly Detection
- ▶ Principal component analysis (PCA)
- ▶ Latent Dirichlet allocation (LDA)

### Computer Vision

### Object Detection

### NLP

### Recommendation

# Big Data & Data Analytics

## Skill Set

### Data Warehousing

- ▶ SSIS, SSRS
- ▶ Hbase, HDFS
- ▶ MongoDB, CouchDB, Cassandra, Teradeta

### BI and Data Visualization

- ▶ Tableau, Splunk, Pentaho, QuickSight, PowerBI, Cognos, Jasper, Qlikview, Pentaho BI, Power View, Datazen

### Programming

- ▶ Python, R, Java, Hive, Scala, SAS, SPSS

### Platform

- ▶ Amazon, Google, Microsoft, Hadoop

### Frameworks

- ▶ Hadoop, Spark
- ▶ Kafka, Storm, Sqoop, Flume
- ▶ Mahout, Drill, Solr
- ▶ Druid, SnappyData, Cassandra
- ▶ Map Reduce, Pentaho

### Predictive analytics

- ▶ Regression
- ▶ Classification
- ▶ Clustering
- ▶ Time Series